



Communities
In Schools®

2019

Communities In Schools Financial Summary



Leadership Message

The 2019-2020 school year has been a challenging year of change for our students, their families and communities. They continue to endure a global pandemic and school closures which drastically have altered the ways in which their success is achieved. Parallel to this has been the continuous work of this country in reconciling our principles with our practices as it relates to Black lives for the betterment of all. For the students that we serve, across all of their multi-dimensional backgrounds and characteristics that they bring to the classroom, Communities In Schools® (CIS™) has continued to meet the challenge. Meeting basic needs has always been a part of our DNA. This past year CIS™ strengthened its practices around building stronger developmental relationships, improving our social emotional development practices and building greater continuity in how CIS™ interfaces with school partners.

Our commitment toward creating more inclusive environments that deliver equitable outcomes for students has led our organization on journeys that has deepened our resolve and unity as a network. Building our competency across our network has strengthened our boards, staff and practices that impact students. This has put us on a path to be a more intentional leader in our communities. Diversity is a strength and improving our practices of inclusion will define and set us in the future.

In light of all of this change, CIS™ continues to grow in the number of students we serve through new and interesting ways. Our ambition of creating conditions that enable our work to be available to school districts in the country is as high as ever. CIS™ has expanded significantly in states like West Virginia and Texas. We have built a licensing model that school districts can deploy directly and have created a training model for school-based staff to learn how CIS™ works and realize their learnings in school where CIS™ does not yet exist.

Finally, with all of this amazing change we were able to have a successful transition of leadership in March. Rey Saldaña, our new President & CEO, has taken charge of the organization and provides a steady hand in continuing CIS's momentum and trajectory in a positive direction. His experience and perspective as an alum is everything that Communities In Schools values as an organization and provides an example of what home-grown leadership can do.

With your support, we will continue to grow and serve students across the country in the ways we know best with love, an uncompromising drive to be excellent in our work, and a commitment to bringing out the best in ourselves and our students. Thank you!



A handwritten signature in black ink, appearing to read 'Rey Saldaña'.

Rey Saldaña
President & CEO



A handwritten signature in black ink, appearing to read 'Steven McCullough'.

Steven McCullough
Chief Operating & Equity Officer

Board of Directors

CHAIRMAN

Elaine Wynn
Elaine P. Wynn and Family Foundation

FOUNDER AND VICE CHAIRMAN

William E. Milliken

Christopher F. Allwin
Bellus Capital

Robert H.B. Baldwin, Jr.
Heartland Payment Systems (retired)

James Cox Chambers
Field Hands Productions

Gerald Croan
Third Sector Capital Partners, Inc.

Kimberly B. Davis
National Hockey League

Joseph DiDomizio

Daniel A. Domenech
American Association of School Administrators

Arne Duncan
Emerson Collective

Pascal Fernandez
Altria Client Services

Michael B. French
Marketing Executive (retired)

Zac Guevara
Capital International Research Inc. (retired)

Jillian Manus
Structure VC

John Nixon
ICAP® (retired)

Darilyn T. Olidge, Esq.
Brightwood Capital Advisors, LLC

Shaquille O'Neal

Carmen Ortiz-McGhee
National Association of Investment Companies

Isaiah Pickens, PhD
iOpening Enterprises

Juan Sepúlveda
Trinity University

Leonard Stern
Shepardson Stern + Kaminsky

Donna Weiss

Sherrie Rollins Westin
Sesame Workshop

Christopher Womack
Southern Company

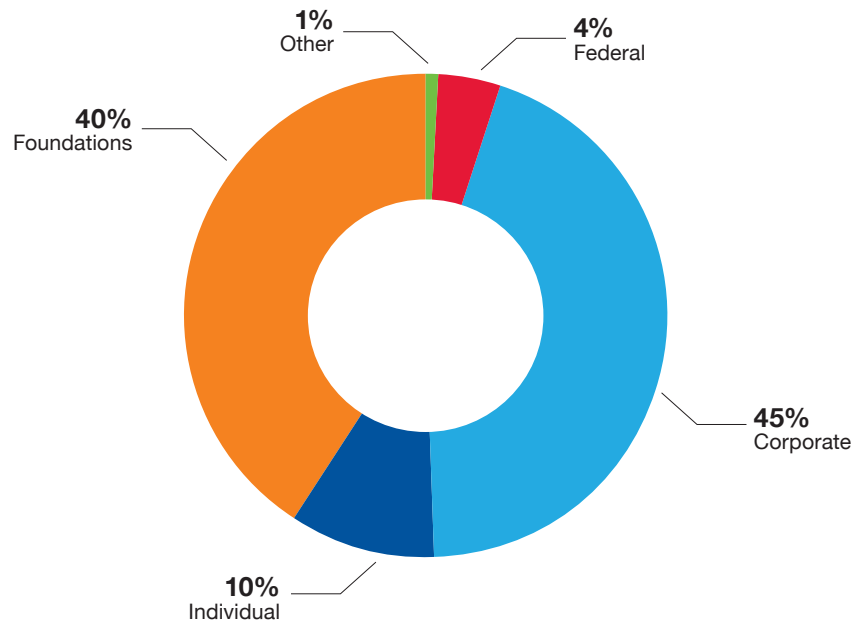
John R. Ettinger
Davis Polk & Wardwell LLP (retired)
Board Member Emeritus

Jonathan G. Powers
Board Member Emeritus

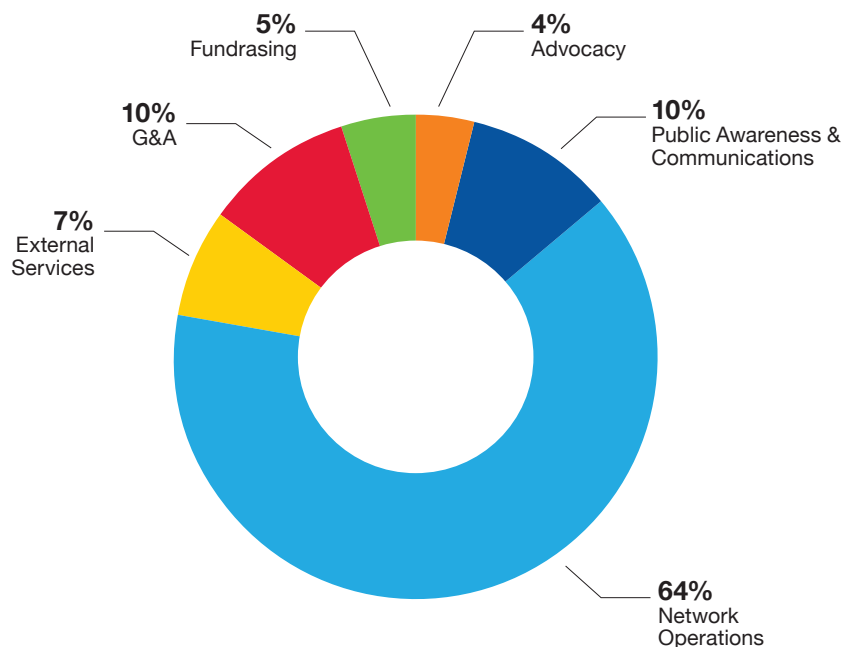
Linda Gale White
Former First Lady of Texas
Board Member Emeritus

Financial Snapshot

SUPPORT AND REVENUE*



EXPENSES*



*Excludes in-kind contributions/services

Fiscal Year 2019

STATEMENT OF ACTIVITIES AND CHANGES IN NET ASSETS

Year Ended September 30, 2019

SUPPORT AND REVENUE

Contributions:

Foundations*	\$9,449,210
Corporations	\$10,386,059
Individual/Family Foundations	\$2,283,970
Grants-governmental agencies	\$931,674
Earned Income	\$832,036
Other Revenue	\$303,735
Sub-Total Support and Revenue	\$24,186,685
In Kind Contributions**	\$28,290,791
Total Support and Revenue	\$52,477,475

EXPENSES

Program Services:

Advocacy	\$1,470,430
Communications & Public Engagement	\$3,409,505
Network Operations	\$21,908,529
External Services	\$2,407,657
Total Program Services	\$29,196,121

Supporting Services:

General and Administrative	\$3,298,632
Fundraising	\$1,774,681
Total Supporting Services	\$5,073,313
In-Kind Services**	\$28,290,791
Total Expenses	\$62,560,225

Change in Net Assets from Operations	(\$10,082,750)
Investment Income (Loss), net	\$1,342,067
Change in Net Assets	(\$8,740,683)
Beginning Net Assets	\$89,717,657
Ending Net Assets	\$80,976,974

STATEMENT OF FINANCIAL POSITION

Year Ended September 30, 2019

ASSETS

Cash and Cash Equivalents	\$31,172,567
Cash Held for Restricted Purposes	\$130,943
Investments	\$34,606,676
Pledges Receivable, Net	\$15,544,720
Government Grants Receivable	\$118,317
Other Assets	\$896,526
Fixed Assets, Net	\$1,120,190
Total Assets	\$83,589,939

LIABILITIES AND NET ASSETS

Liabilities:

Accounts Payable and Accrued Liabilities	\$1,909,551
Deferred Revenue	\$17,224
Deferred Rent	\$686,190
Total Liabilities	\$2,612,965
Net Assets:	
With Donor Restriction	\$70,504,430
Without Donor Restriction	\$10,472,544
Total Net Assets	\$80,976,974
Total Liabilities and Net Assets	\$83,589,939

Communities In Schools' fiscal year began October 1, 2018 and ended September 30, 2019.

*Does not include family foundations.

**In-kind contributions/services consist of donated media and donated strategic planning services.

Our Stewardship

Communities In Schools is deeply grateful to all who support our work. Every dollar makes a difference for every child, and we are committed to the highest standards of transparency, efficiency and stewardship.

LUMINARIES

AbbVie
Altria Group
America's Promise Alliance
American Express
Anonymous
AT&T
Robert H.B. Baldwin, Jr.
and Margaret J. Sieck
Bank of America Charitable
Foundation
Ballmer Group
James Cox Chambers
Chan Zuckerberg Initiative
ECMC Foundation
The Edna McConnell Clark
Foundation
Costco Wholesale
FCA Foundation
The Joseph H. Flom Foundation
Ford Foundation
Hudson
Lucky Brand
George Lucas Family Foundation
Jillian Manus
NuStar Foundation
Players Coalition Charitable
Foundation
Rebuild Texas Fund
Robertson Foundation
Sanford Harmony
George and Michele Shaw
The Wildflower Foundation, Inc.
Elaine Wynn through
the Elaine P. Wynn & Family
Foundation

VISIONARIES

Anonymous
Stephen and Louise Caruthers
Steve Cassaday
James M. and Susan Cole
Jerry Croan
Kim Davis
Joe DiDomizio
Duff & Phelps
Epson America
Dale Erquiaga
John R. Ettinger
Mike French
Glamour Magazine
Greehey Family Foundation
Alva Greenberg
Randall and Mary Hack
Henry Hamman
Caroline Markfield
Lauren Marx-Abel
Andrew Medvedev
John Nixon
Dr. Quentin Regestein
Leonard and Lauren Stern
Margaretta Taylor
Jason G. and Donna Weiss
David and Sherrie Westin

CHAMPIONS

Anonymous
Whitney Baldwin
James Beissner
Nancy Blood

Gerald Breslauer
Stephen and Cynthia Brown
Joy Bryant
Dan Cardinali and Scott Mitchell
The Causeway Agency
Melissa and Doug Cifu
CLC Foundation, Inc.
Lillian Clementi
Teresa Dass
Frederick Dearborn
Daniel Domenech
Arne Duncan
Pascal Fernandez
David Gantsweg
Nigel Goldenfeld
Ann and Will Gregory
Rebecca Ichord
Jessica Karode
Kirby Family Foundation
Thomas Klitgaard and Kyle Staver
Edward and Susan Kritzman
Ernie Lee
Richard Lovett
Karen and Peter MacKinnon
Paul Selvin and Kathy Maniates
The Mather Fund and Tess Halinan
William and Jean Milliken
Laurey and Jinks Millspaugh
Debra Montanino and
Joan Sherman
Katie Nelson
Kathryn Nichol
Darilyn Olidge

Dawnrae Oliveira
Tim Plant
Jonathan and Virginia Powers
Kathy Raseman
Anne Rutherford Family
Charitable Fund
David Shilling
SS+K
Joseph Tyo
Pamela Weil
Jeff White

SUPPORTERS

Andiamo
Sarah Axler
Marjory and Peter Bankson
Nathan Brown
Ellen and Robert Greer
William Knull
KW Property Management
& Consulting
Philip and Linda Lader
Janet Markman
Lilli Petruzzelli
Abby Pruitt
Greg Ribakove
Rey and Jessica Saldaña
Peter Schwartzman
Elaine Scott
Robert Small
Linda Gale White

How Can You Help?



DONATE



ADVOCATE



VOLUNTEER

Visit CommunitiesInSchools.org to learn more.



2345 Crystal Drive, Suite 700, Arlington, VA 22202

© 2020 Communities In Schools, Inc.